

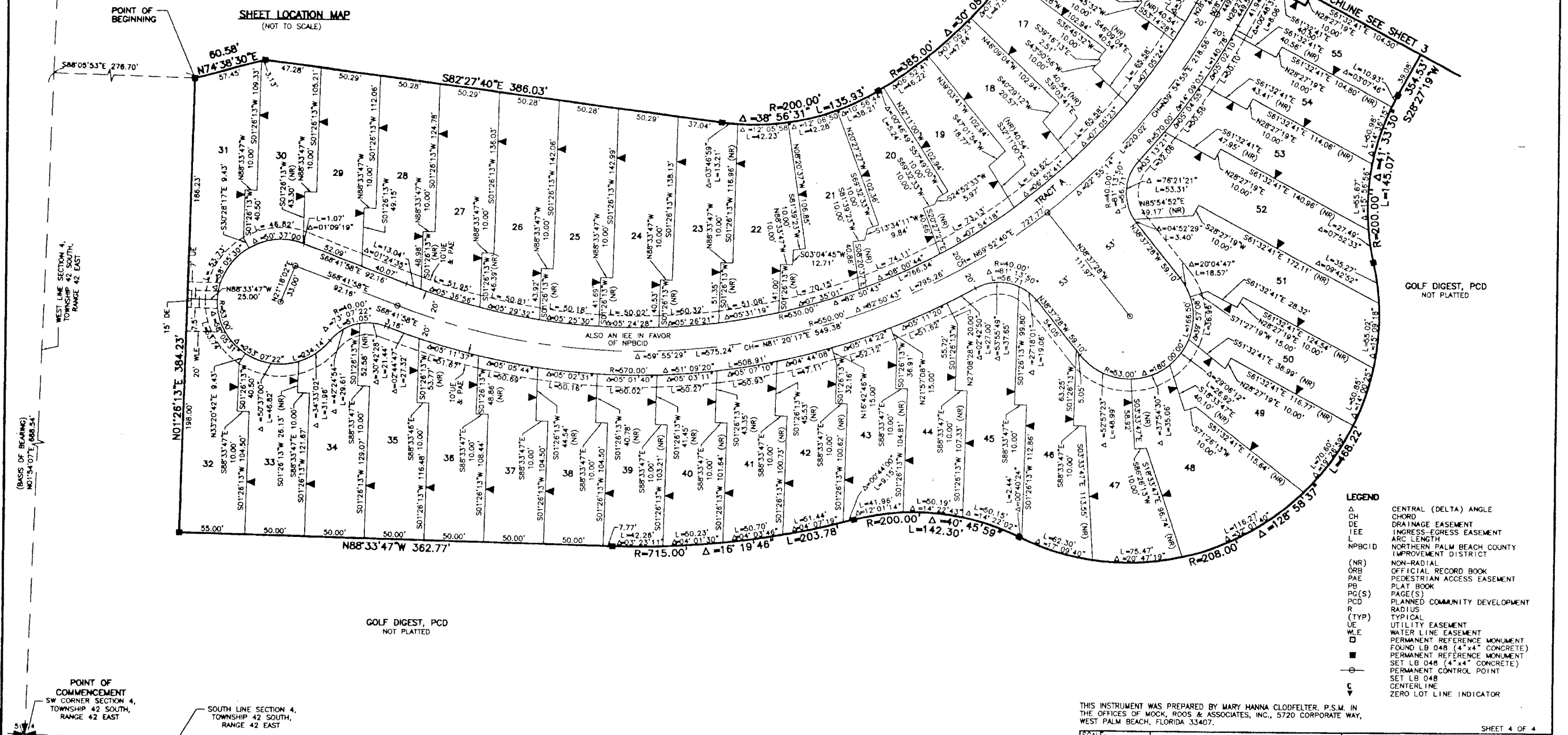
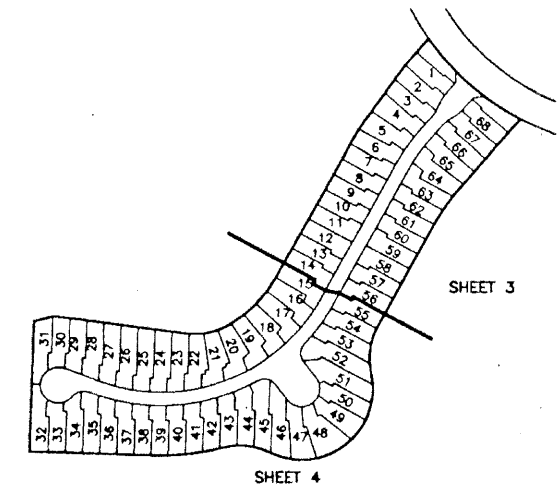
MIRASOL PARCEL THREE

PART OF GOLF DIGEST P.C.D.
SECTION 4, TOWNSHIP 42 SOUTH, RANGE 42 EAST,
CITY OF PALM BEACH GARDENS,
PALM BEACH COUNTY, FLORIDA
NOVEMBER, 2000 SHEET 4 OF 4



STATE OF FLORIDA
COUNTY OF PALM BEACH
THIS PLAT WAS FILED FOR
RECORD _____ DAY OF _____
AD, 2000 AND DULY RECORDED
IN PLAT BOOK _____ ON PAGE
_____ AND _____
DOROTHY H. WILKEN, CLERK
BY: _____, D.C.

CIRCUIT COURT SEAL



(BASIS OF BEARING)
N01°26'13"E 364.23'

POINT OF COMMENCEMENT
SW CORNER SECTION 4,
TOWNSHIP 42 SOUTH,
RANGE 42 EAST

REV: 11-30-00
CAD FILE:
TAYLPA03\PA03AP03

- LEGEND**
- Δ CENTRAL (DELTA) ANGLE
 - CH CHORD
 - DE DRAINAGE EASEMENT
 - IEE INGRESS-EGRESS EASEMENT
 - L ARC LENGTH
 - NPBCID NORTHERN PALM BEACH COUNTY IMPROVEMENT DISTRICT
 - (NR) NON-RADIAL
 - ORB OFFICIAL RECORD BOOK
 - P AE PEDESTRIAN ACCESS EASEMENT
 - PB PLAT BOOK
 - PG(S) PAGE(S)
 - PCD PLANNED COMMUNITY DEVELOPMENT
 - R RADIUS
 - (TYP) TYPICAL
 - UE UTILITY EASEMENT
 - WE WATER LINE EASEMENT
 - PM PERMANENT REFERENCE MONUMENT FOUND LB 048 (4"x4" CONCRETE)
 - PR PERMANENT REFERENCE MONUMENT SET LB 048 (4"x4" CONCRETE)
 - PC PERMANENT CONTROL POINT
 - SET LB 048
 - C CENTERLINE
 - Z ZERO LOT LINE INDICATOR

THIS INSTRUMENT WAS PREPARED BY MARY HANNA CLODFELTER, P.S.M. IN THE OFFICES OF MOCK, ROOS & ASSOCIATES, INC., 5720 CORPORATE WAY, WEST PALM BEACH, FLORIDA 33407.

SCALE: 1"=40'	FLORIDA L.B. NO. 48
P.A. NO.: 99313.00	MOCK ROOS ENGINEERS PLANNERS
DATE: MARCH, 2000	
DRAWING NO. 42-42-04-39	5720 Corporate Way, West Palm Beach, Florida 33407 (561) 663-3113, fax 478-7248

MIRASOL PARCEL THREE
PART OF GOLF DIGEST P.C.D.
SITUATE IN SECTION 4,
TOWNSHIP 42 SOUTH, RANGE 42 EAST,
CITY OF PALM BEACH GARDENS,
PALM BEACH COUNTY, FLORIDA

SHEET 4 OF 4